

2024



The
Mojave
Sectional Series



Welcome to Adventure Homes. We offer you the best value in manufactured housing in today's market. Our homes are built with unbelievable eye appeal & product standards are often above and beyond HUD code. Additionally, we offer award winning sales, service and production teams to enhance your value even more. **We look forward to assisting you and welcoming you into our family of satisfied retailers and customers!**

The Expedition

Model 3403S
3 Bedroom • 2 Bath • Floor Size 934 sq. ft.



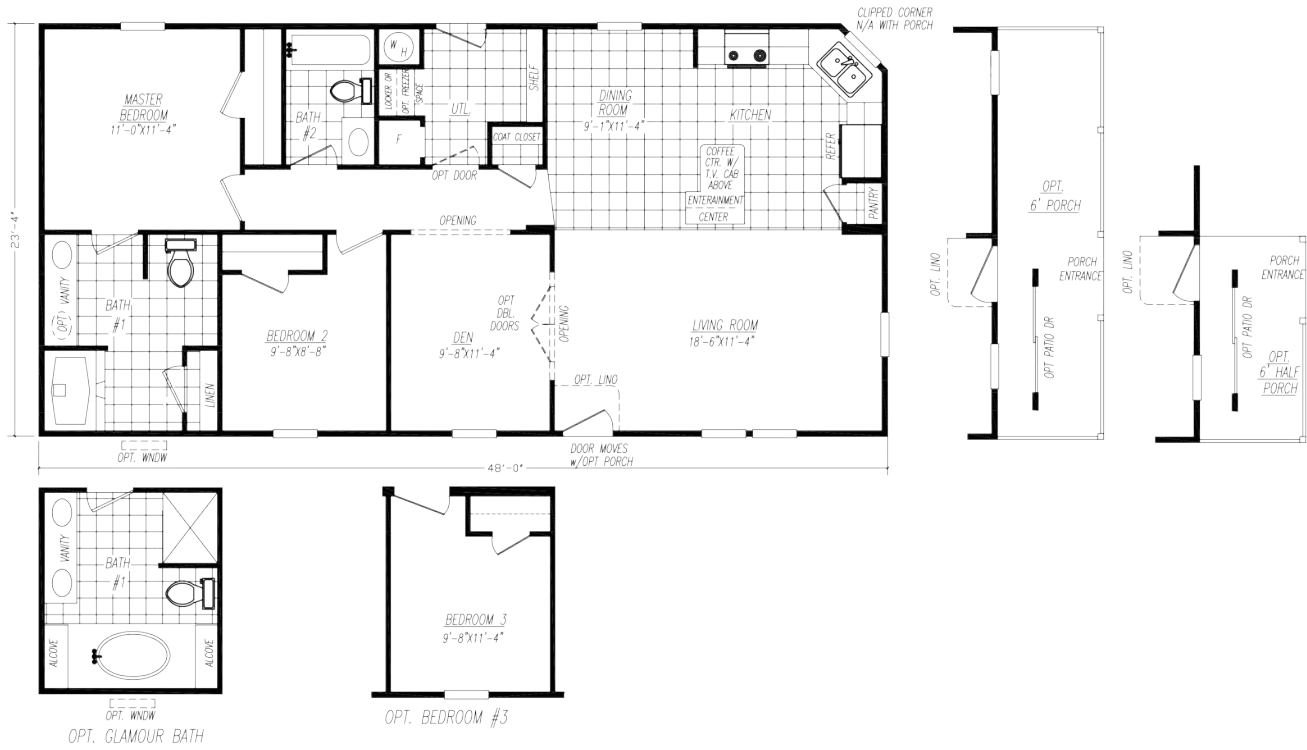
Every home built by Adventure is constructed with premium materials in a climate-controlled enclosed building facility. This helps eliminate weather-damaged building supplies and weather-related delays. These state-of-the-art facilities ensure precise and quality construction. All Adventure homes meet, and in many cases exceed HUD code.

Adventure Homes Mojave Series can be customized to fit your every day needs and wants!

The *White Water*

2 Bedroom • 2 Bath • Floor Size 1,120 sq. ft.

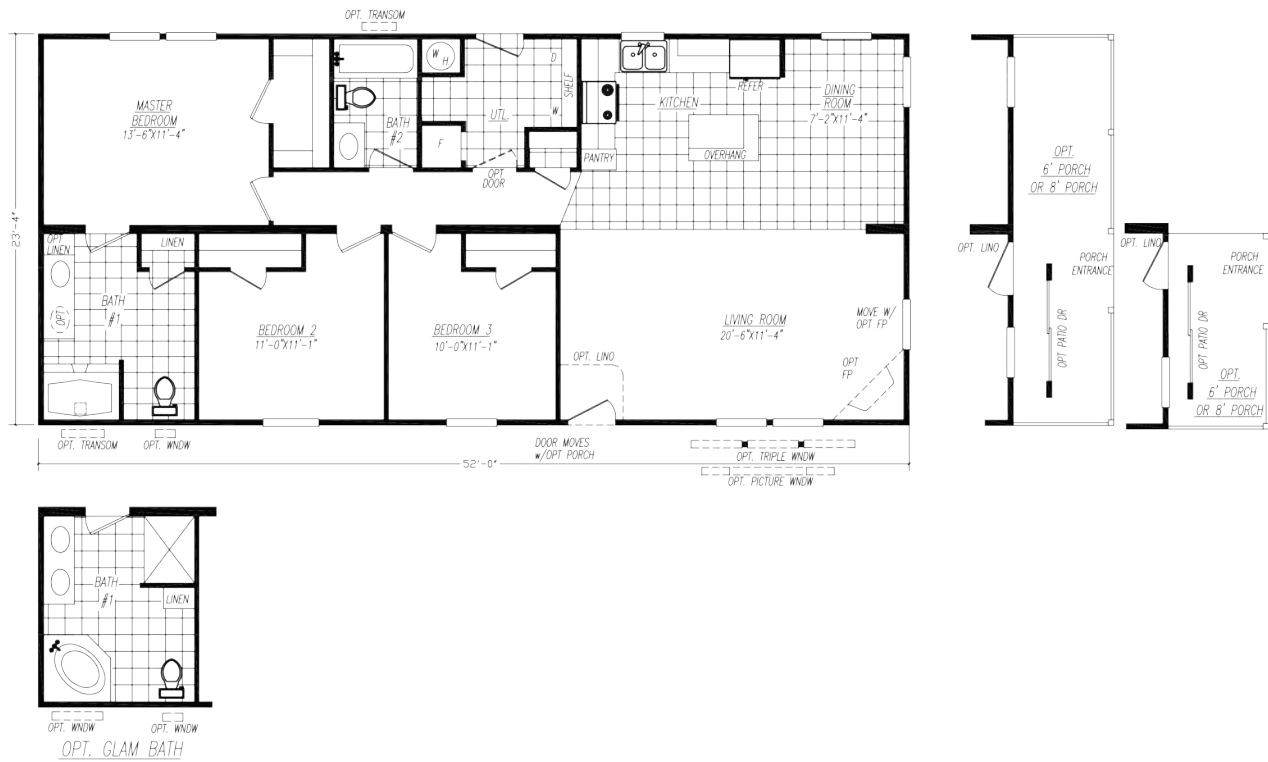
Model 3482S



The *Crusade*

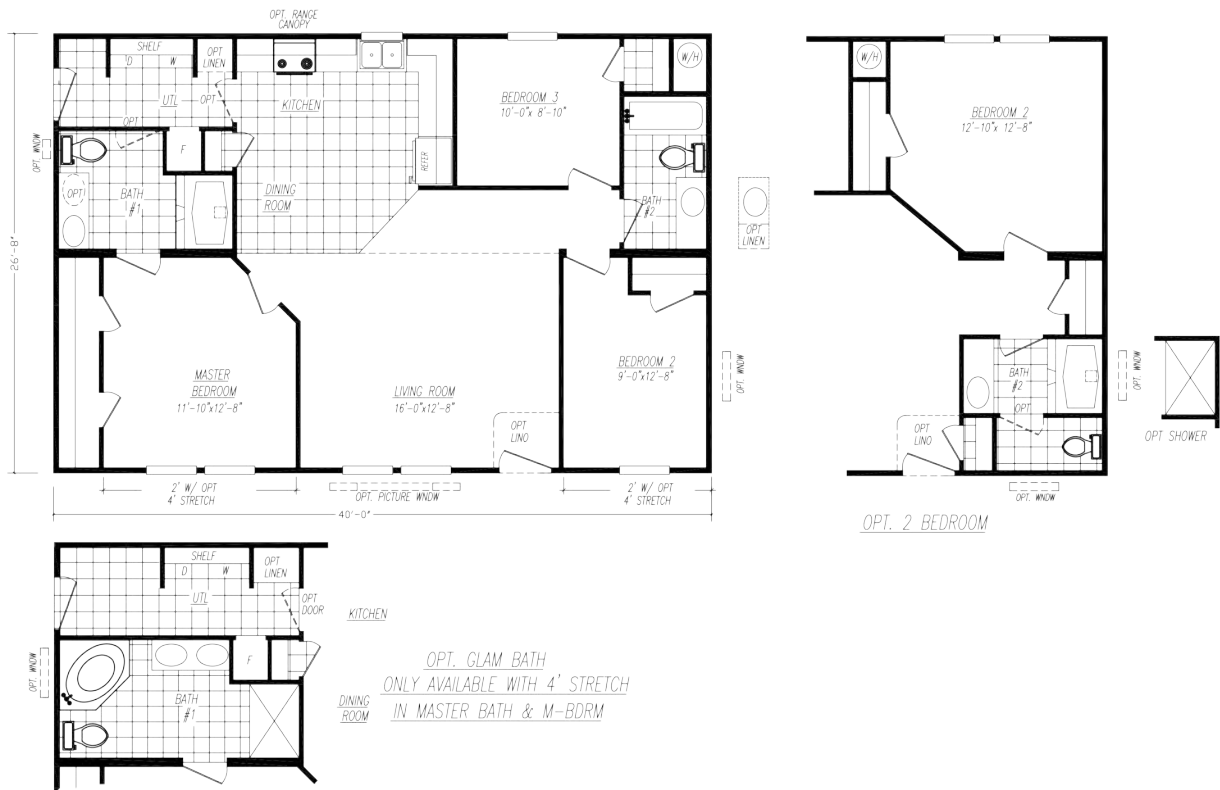
3 Bedroom • 2 Bath • Floor Size 1,214 sq. ft.

Model 3523F



The Portage

Model 4403C
3 Bedroom • 2 Bath • Floor Size 1,067 sq. ft.



The Pioneer

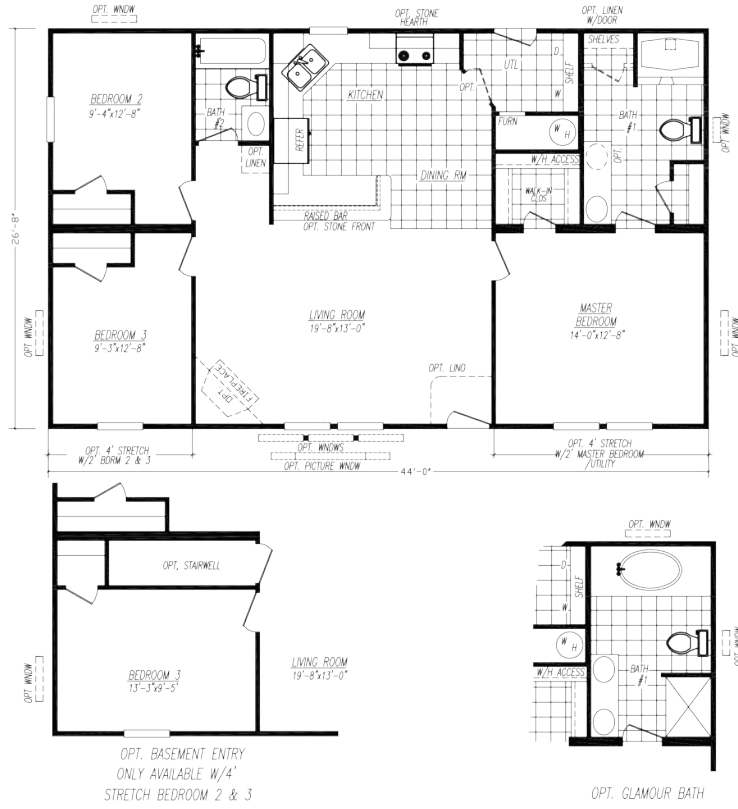
Model 4423S
3 Bedroom • 2 Bath • Floor Size 1,120 sq. ft.



The Kankakee

Model 2844-1

3 Bedroom • 2 Bath • Floor Size 1,174 sq. ft.



The Ozark

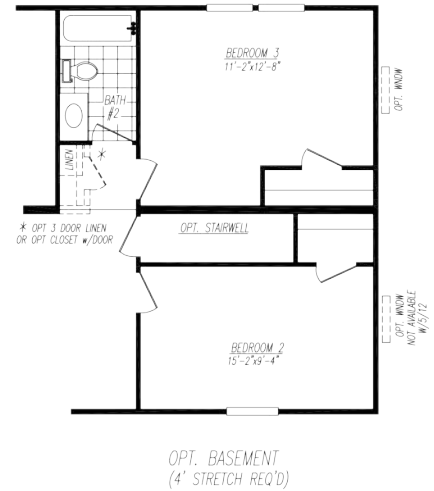
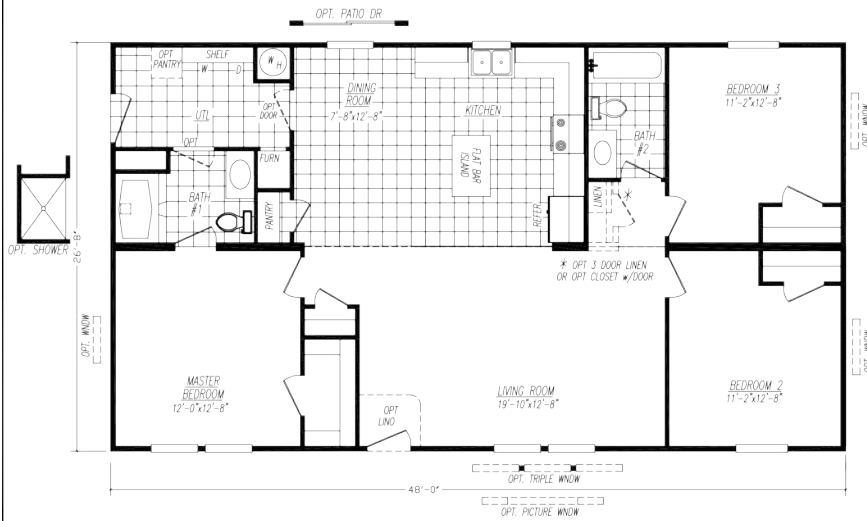
Model 4443U

3 Bedroom • 2 Bath • Floor Size 1,174 sq. ft.



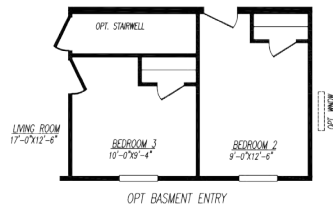
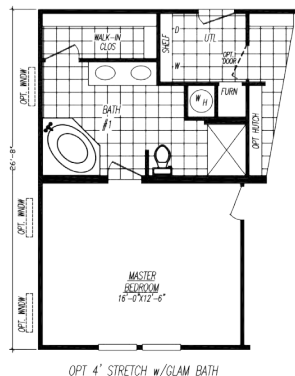
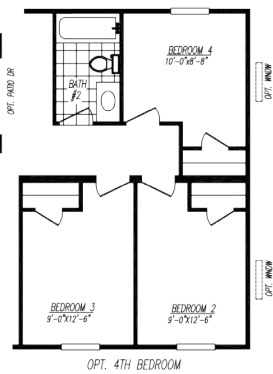
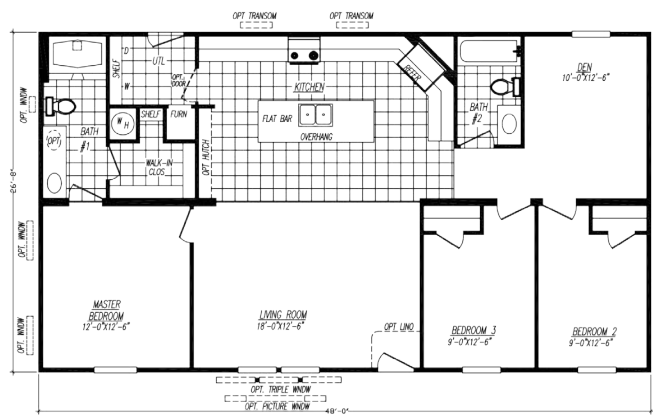
The Woodland

Model 4483M
3 Bedroom • 2 Bath • Floor Size 1,280 sq. ft.



The Coronado

Model 4483S
3 Bedroom • 2 Bath • Floor Size 1,280 sq. ft.



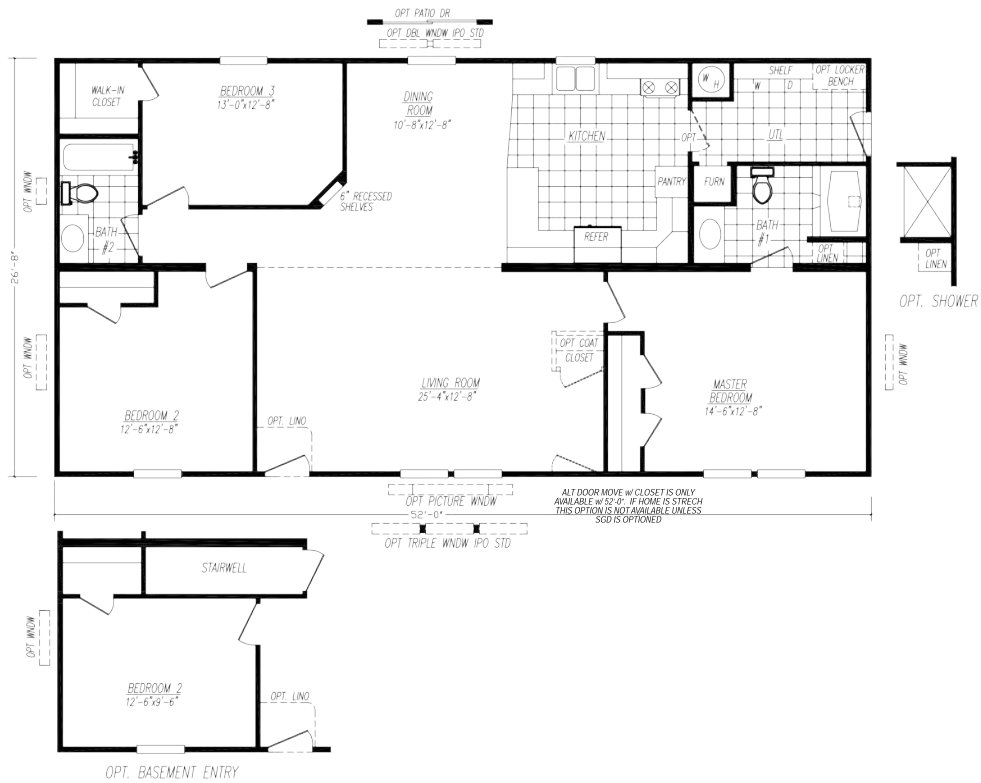
The *Southeastern*

Model 2852-1
3 Bedroom • 2 Bath • Floor Size 1,387 sq. ft.



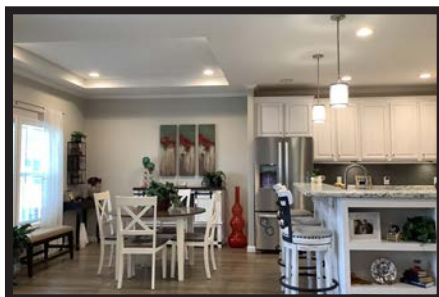
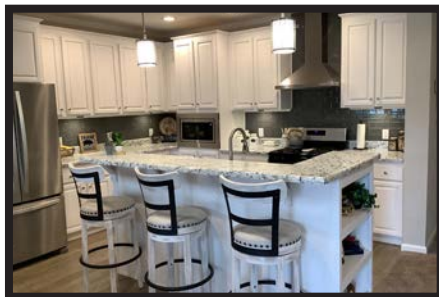
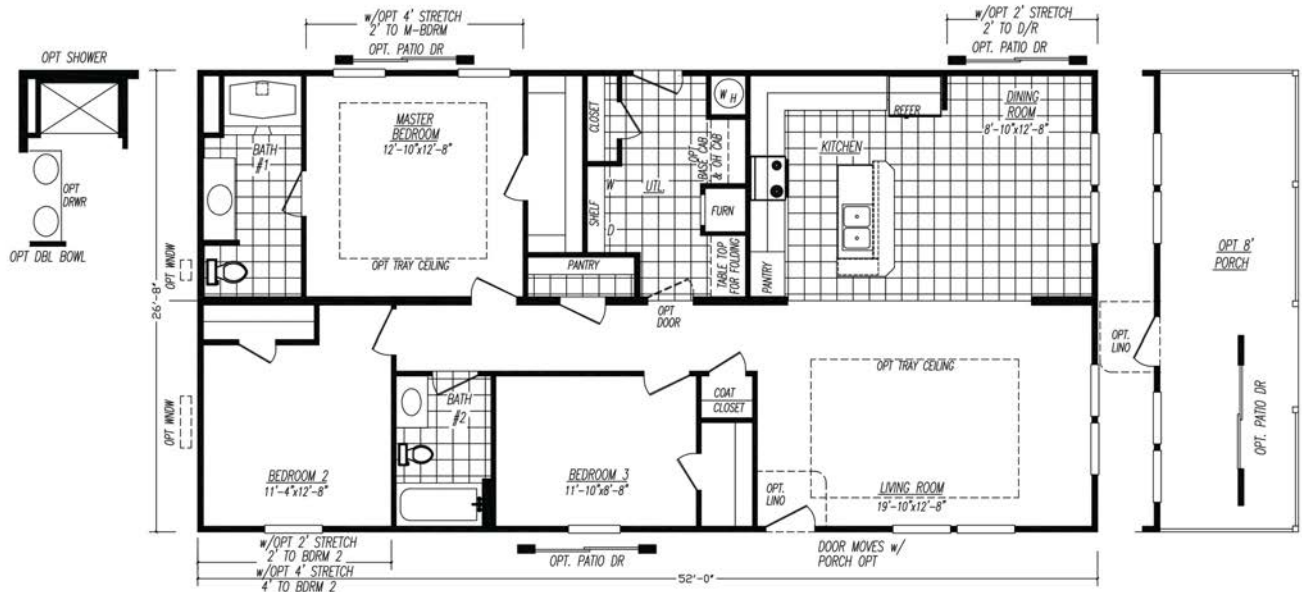
The *Waterloo*

Model 4523C
3 Bedroom • 2 Bath • Floor Size 1,387 sq. ft.



The Pinecrest

Model 4523R
3 Bedroom • 2 Bath • Floor Size 1,387 sq. ft.



The Zenith

Model 4563N
3 Bedroom • 2 Bath • Floor Size 1,494 sq. ft.



The Rockford

Model 4563Z
3 Bedroom • 2 Bath • Floor Size 1,494 sq. ft.



The Palisade

Model 4603C
3 Bedroom • 2 Bath • Floor Size 1,600 sq. ft.



The Homestead

Model 4603CD 3 Bedroom • 2 Bath • Floor Size 1,600 sq. ft.

Model 4603CD



The Colorado

Model 4603GT 3 Bedroom • 2 Bath • Floor Size 1,600 sq. ft.

Model 4603GT



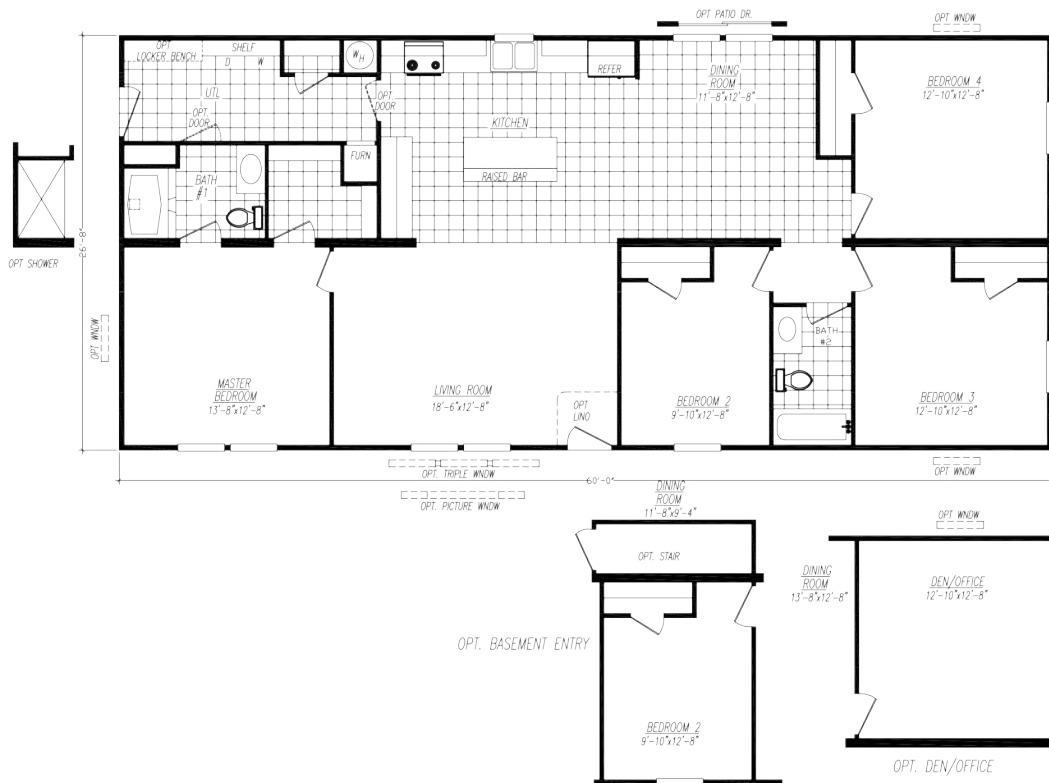
The Voyager

Model 4603S
3 Bedroom • 2 Bath • Floor Size 1,600 sq. ft.



The Summitt

Model 4604A
4 Bedroom • 2 Bath • Floor Size 1,600 sq. ft.



The Forestville

3 Bedroom • 2 Bath • Floor Size 1,654 sq. ft.

Model 4623D



The Acadia

3 Bedroom • 2 Bath • Floor Size 1,707 sq. ft.

Model 4643A



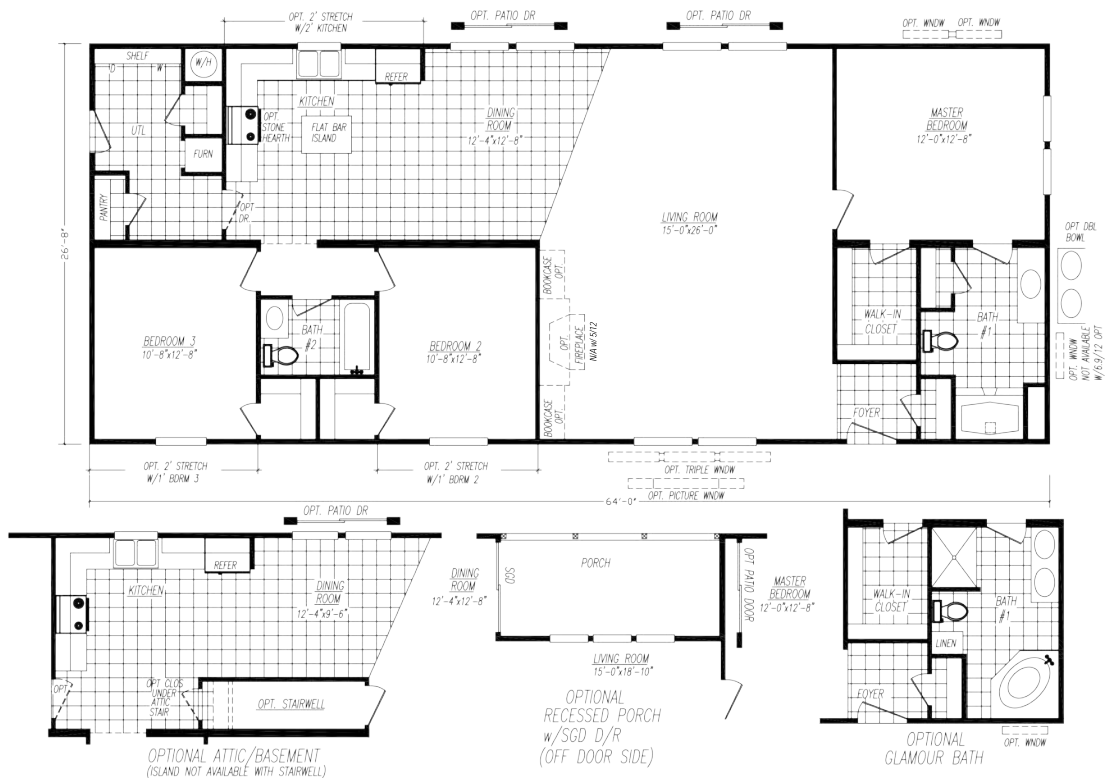
The *Augusta*

Model 4643L
3 Bedroom • 2.5 Bath • Floor Size 1,707 sq. ft.



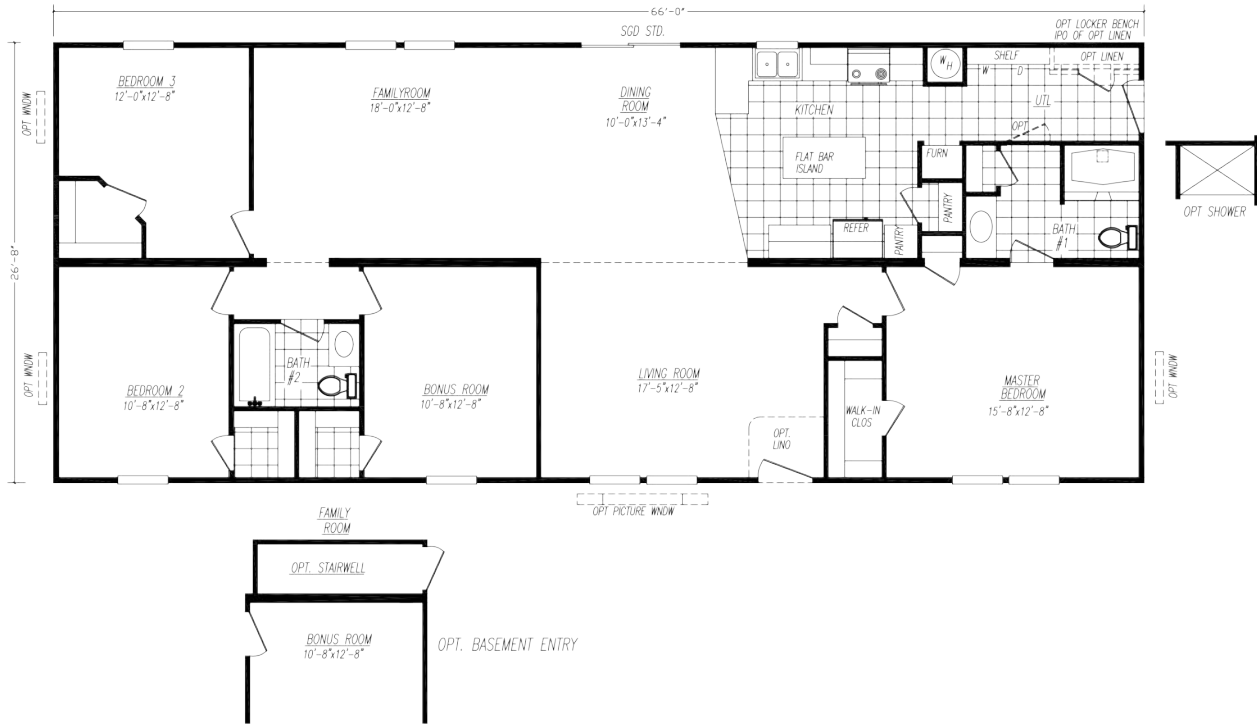
The *Waldon*

Model 4643P
3 Bedroom • 2 Bath • Floor Size 1,707 sq. ft.



The Eagle

Model 4663B
3 Bedroom • 2 Bath • Floor Size 1,760 sq. ft.



The Boone

Model 4683B
3 Bedroom • 2 Bath • Floor Size 1,814 sq. ft.



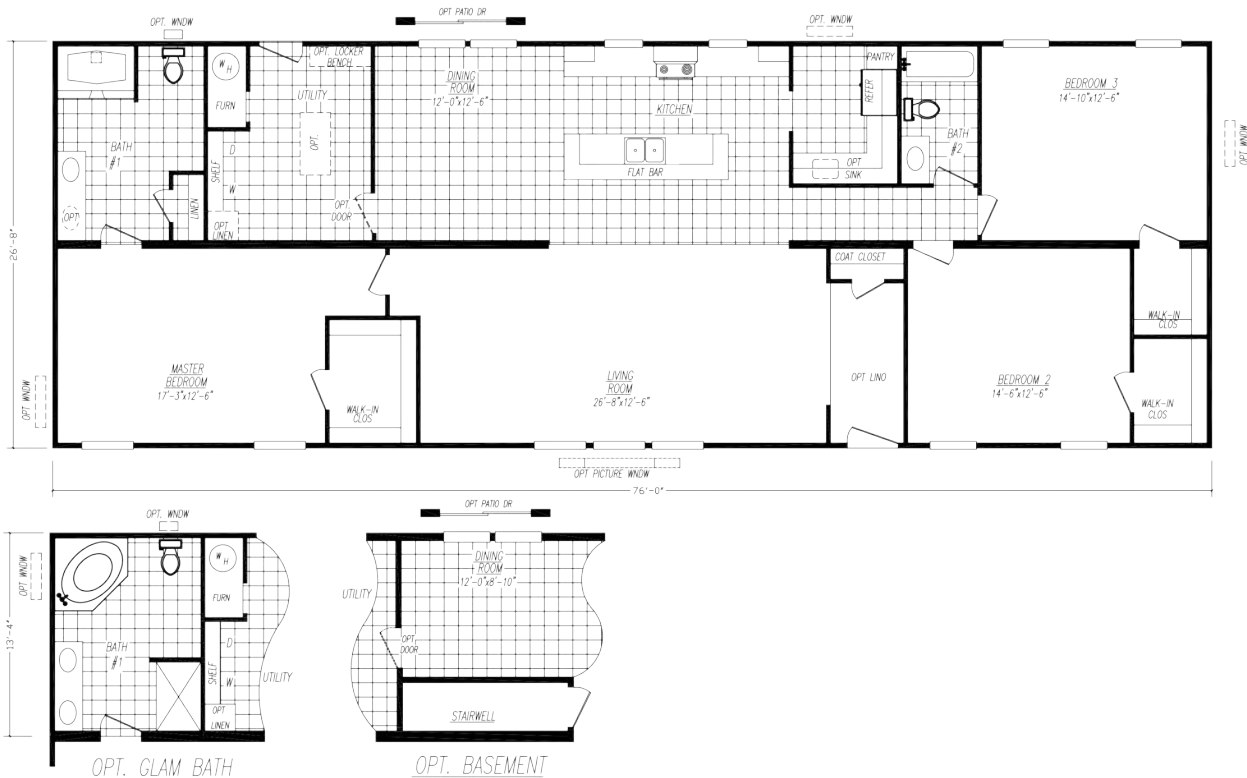
The Endeavor

Model 4683M
3 Bedroom • 2 Bath • Floor Size 1,814 sq. ft.



The Journey

Model 4763N
3 Bedroom • 2 Bath • Floor Size 2,027 sq. ft.



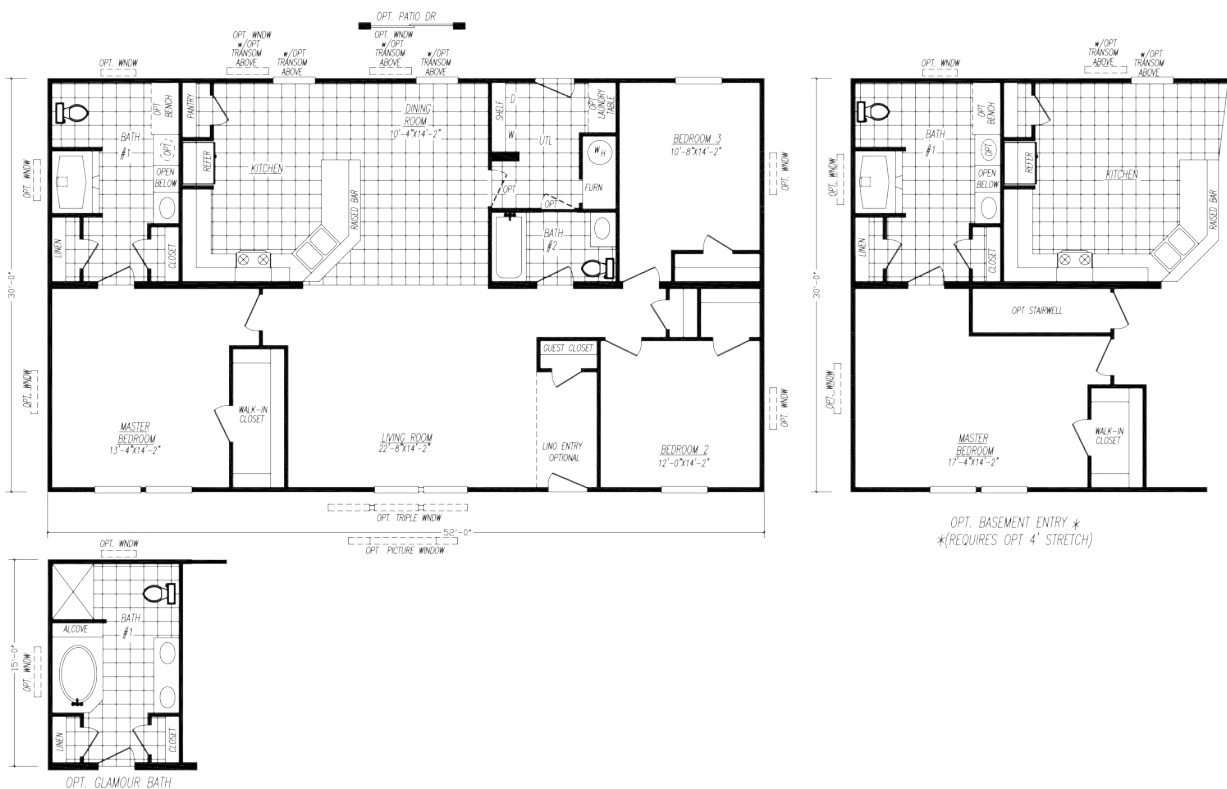
The Pines

Model 4764K
 4 Bedroom • 2 Bath • Floor Size 2,027 sq. ft.



The Enterprise

Model 0523H
 3 Bedroom • 2 Bath • Floor Size 1,560 sq. ft.



The *Artec*

Model 0563S
 3 Bedroom • 2 Bath • Floor Size 1,680 sq. ft.



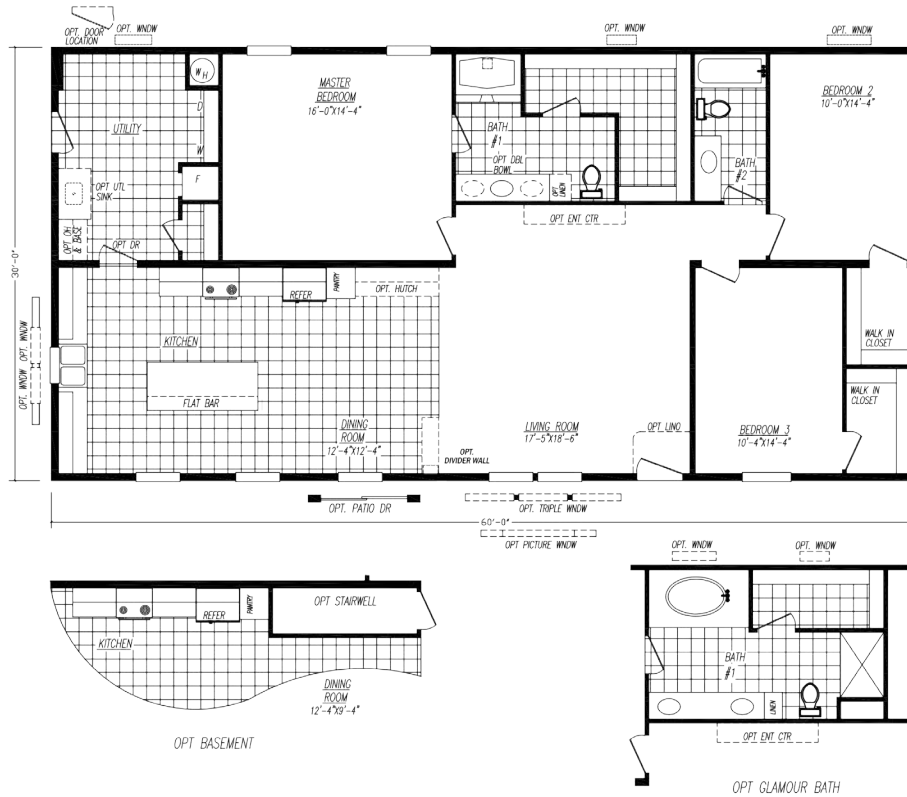
The *Buckhannon*

Model 0603CBK
 3 Bedroom • 2 Bath • Floor Size 1,800 sq. ft.



The Titan

Model 0603K
3 Bedroom • 2 Bath • Floor Size 1,800 sq. ft.



The Hocking Hills

Model 0643B
3 Bedroom • 2 Bath • Floor Size 1,920 sq. ft.



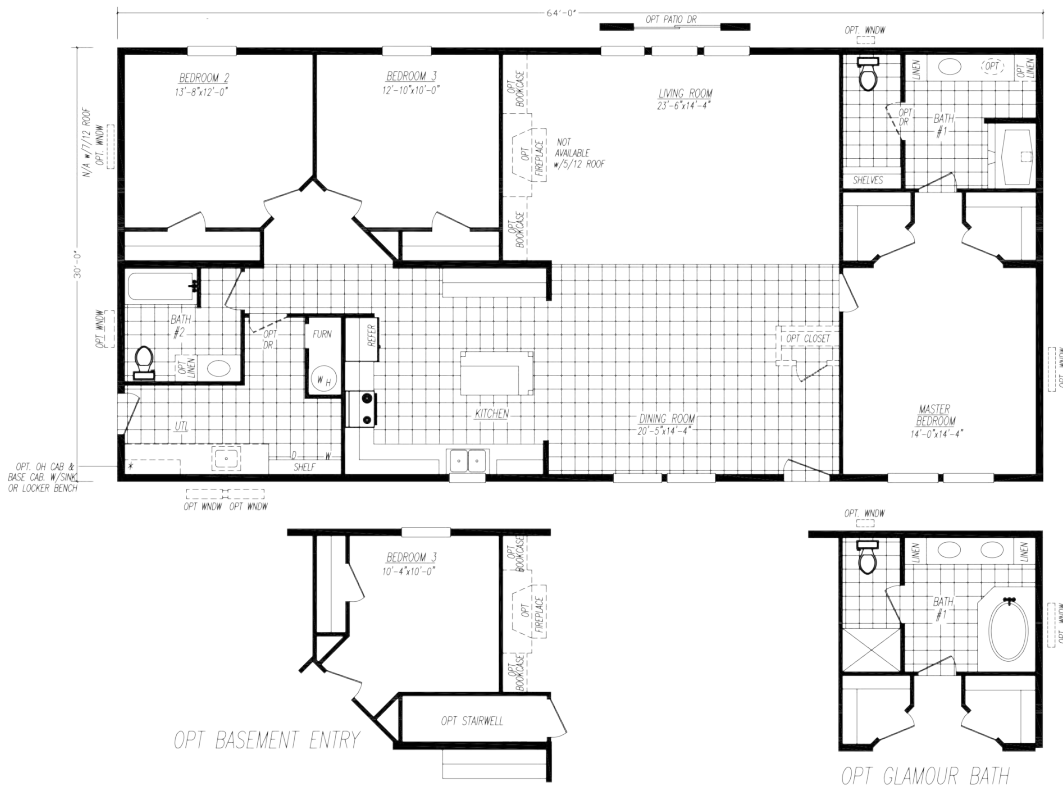
The Cambridge

Model 0643FF
3 Bedroom • 2 Bath • Floor Size 1,920 sq. ft.

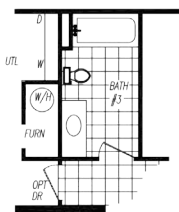
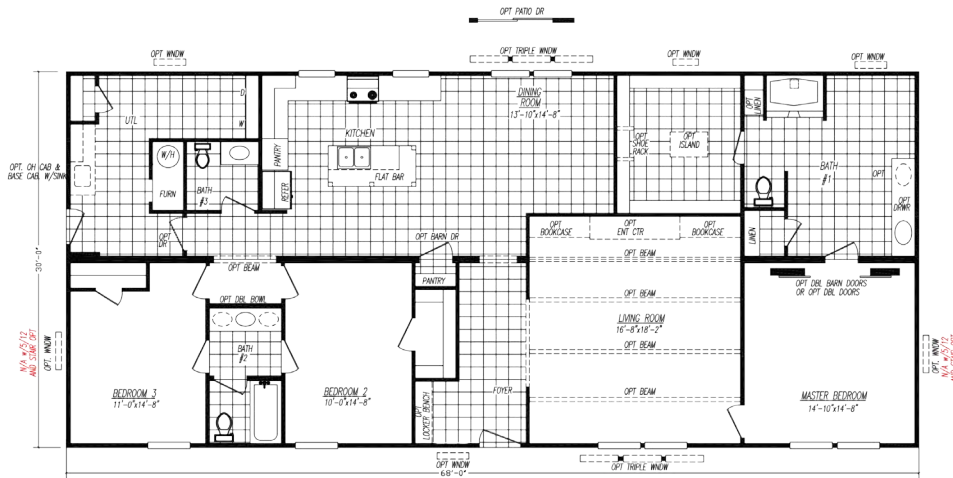


The Red Rock

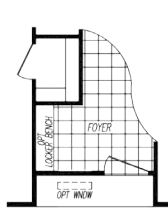
Model 0643T
3 Bedroom • 2 Bath • Floor Size 1,920 sq. ft.



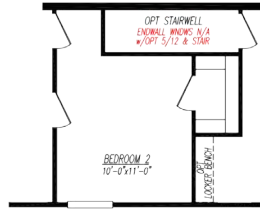
The *Auburn Aire* 3 Bedroom • 2 Bath • Floor Size 2,040 sq. ft. Model 0683C



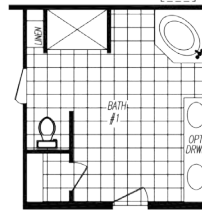
OPT THIRD FULL BATH



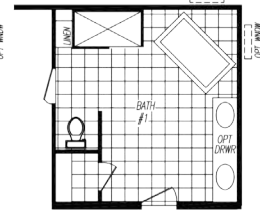
OPT RECESSED ENTRY



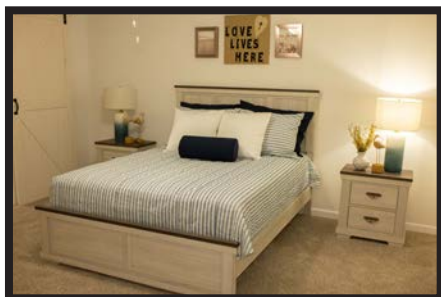
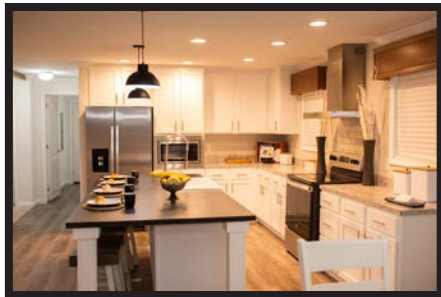
OPT BASEMENT ENTRY



OPT CALMOUR BATH #1

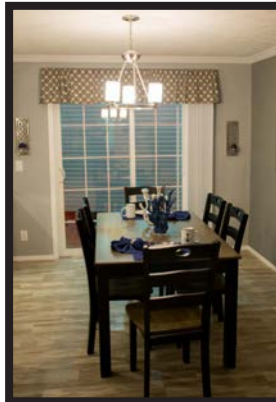
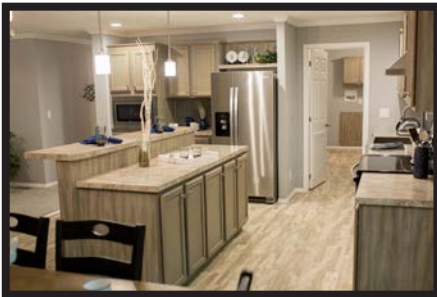
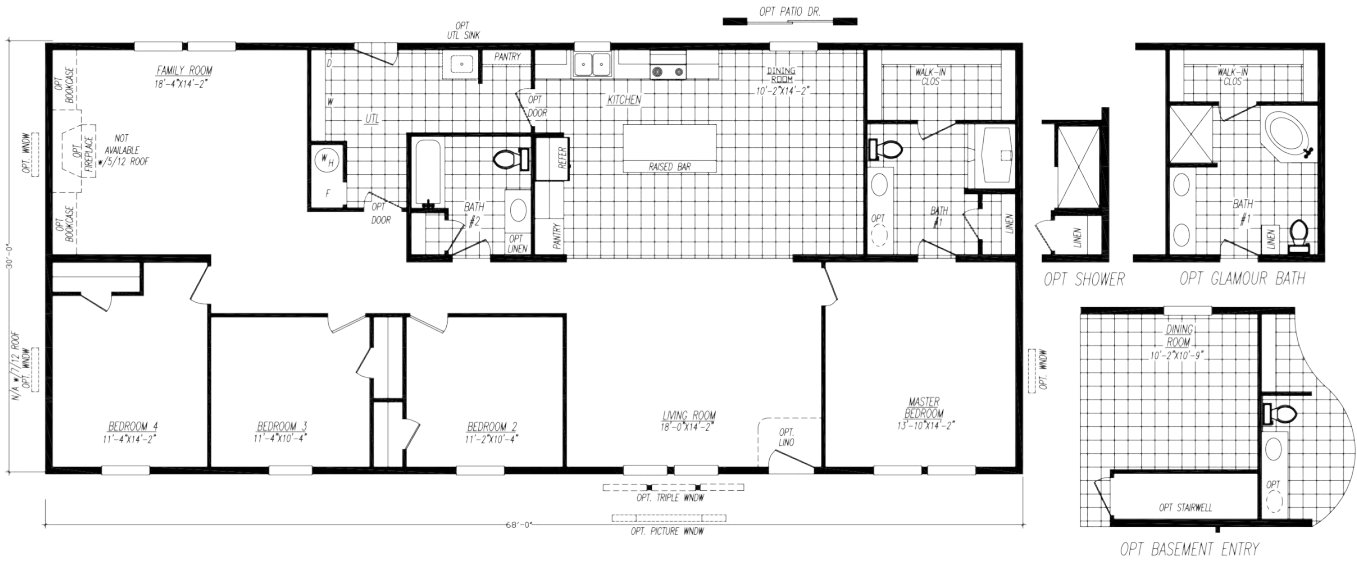


OPT CALMOUR BATH #2
W/60\"/>



The Graylock

Model 0684F
4 Bedroom • 2 Bath • Floor Size 2,040 sq. ft.



The Mohican

Model 0763C
3 Bedroom • 2 Bath • Floor Size 2,280 sq. ft.



The Carlton

Model 0763D
3 Bedroom • 3.5 Bath • Floor Size 2,280 sq. ft.



The Green Valley

Model 0763E
3 Bedroom • 2 Bath • Floor Size 2,280 sq. ft.



The Columbia

Model 0764C
4 Bedroom • 2 Bath • Floor Size 2,280 sq. ft.

25



The *Stone Mountain*

Model 0764L
4 Bedroom • 2 Bath • Floor Size 2,280 sq. ft.



The *Monument*

Model 0764R
4 Bedroom • 2 Bath • Floor Size 2,280 sq. ft.



The *Majestic*

Model 0764S
4 Bedroom • 2 Bath • Floor Size 2,280 sq. ft.



The *Silver Star*

Model 0765M
5 Bedroom • 3 Bath • Floor Size 2,280 sq. ft.



Mojave Series

Standard Features

Exterior

Thermal Zone III Construction
Nominal 3/12 Roof Pitch
R-28-11-11 Insulation
(Additional Windows & Doors May Require Higher Insulation Values)
Vinyl Siding
7/16" OSB Wrap under Vinyl Siding
Housewrap w/ Window Tape
3-Tab Fiberglass Shingles
7/16" OSB Roof Sheathing
Dead Bolt Locks at Front and Rear (Keyed Alike)
Vinyl Single Hung Windows w/ Grids - Low "E" w/ Argon
Foam All Exterior Windows
38"x82" R.O. 6 Panel Residential Front Door (No Storm)
34"x82" R.O. 6 Panel Residential Rear Door (No Storm)
2x6 Floor Joists 16" O.C. (12', 14', 24' & 28' Wides)
2x8 Floor Joists 16" O.C. (16' & 32' Wides)
20 LB Roof Load
2x4 Exterior Walls 16" O.C.
Raised Panel Shutters at FDS & Hitch (Single)
Raised Panel Shutters at FDS Only (Sectional)
Light Fixtures at All Exterior Doors
Full Length Chassis w/ Outriggers
99.5" I-Beam Spread, Detachable Hitch

Interior

Customer Choice Decor Selections
2" Plastic Mini-Blinds Throughout
Door Stop All 3 Sides
94" Flat Ceilings
Blown Textured Ceiling
OSB Tounge & Groove Floor Decking
Vinyl Wall Panels Throughout
Flat Wrapped Moldings Throughout
25oz. Plush Carpet
3/8" Rebond Carpet Pad
Vinyl Flooring
Wire Closet Shelving
2 Panel White Interior Doors Throughout
Mortised Interior Door Hinges

Electrical, Plumbing, & Heating

Smoke Detectors in Main Living Areas &
All Bedrooms
200 AMP Service, Electric Furnace
40 Gallon Electric Water Heater
Exterior Electrical Receptacle (FDS)
Copper Wiring, PEX Plumbing
Whole House Shut-off Valve near Water Heater
Water Shut-off Valves (All Sinks & Commodes)
Metal Heat Ducts
GFI Receptacles in Kitchen and Baths
Bedroom Ceiling Lights Throughout
Plumb & Wire for Washer & Dryer
Utility Shelf above Washer & Dryer

Kitchen

Black Electric Coil Top Range
Black 18cf Refrigerator
Black 30" Power Range Hood
30" Overhead Cabinets w/ Fixed Center Shelves
Shaker Style MDF Wrapped Cabinet Doors & Stiles
Concealed Cabinet Door Hinges
(1) Bank of Drawers w/ Residential Rails & Guides
Laminated Countertops
Stainless Steel Kitchen Sink
Nickel Gooseneck Faucet w/ Pulldown Sprayer
Cabinet over Range & Shelf over Refrigerator

Bath

1pc Tub Shower w/ Anti-Scald Single Lever Faucet
(Bath #1 - Single)
1pc Garden Tub Shower (Bath #1 - Sectional)
1pc Tub Shower w/ Anti-Scald Single Lever Faucet
(Additional Bathrooms)
Laminated Countertops
Mirror above Each Bathroom Sink
Power Exhaust Fans in Bathroom(s)
China "Water Saver" Commode in Bathroom(s)
White China Sink(s) w/ Single Lever Faucet(s)

Because of continuous product improvements, specifications
are subject to change without notice or obligation

ADVENTURE HOMES

www.AdventureHomes.net

1119 Fuller Drive, Garrett, IN 46738

877-510-1955



January
2024